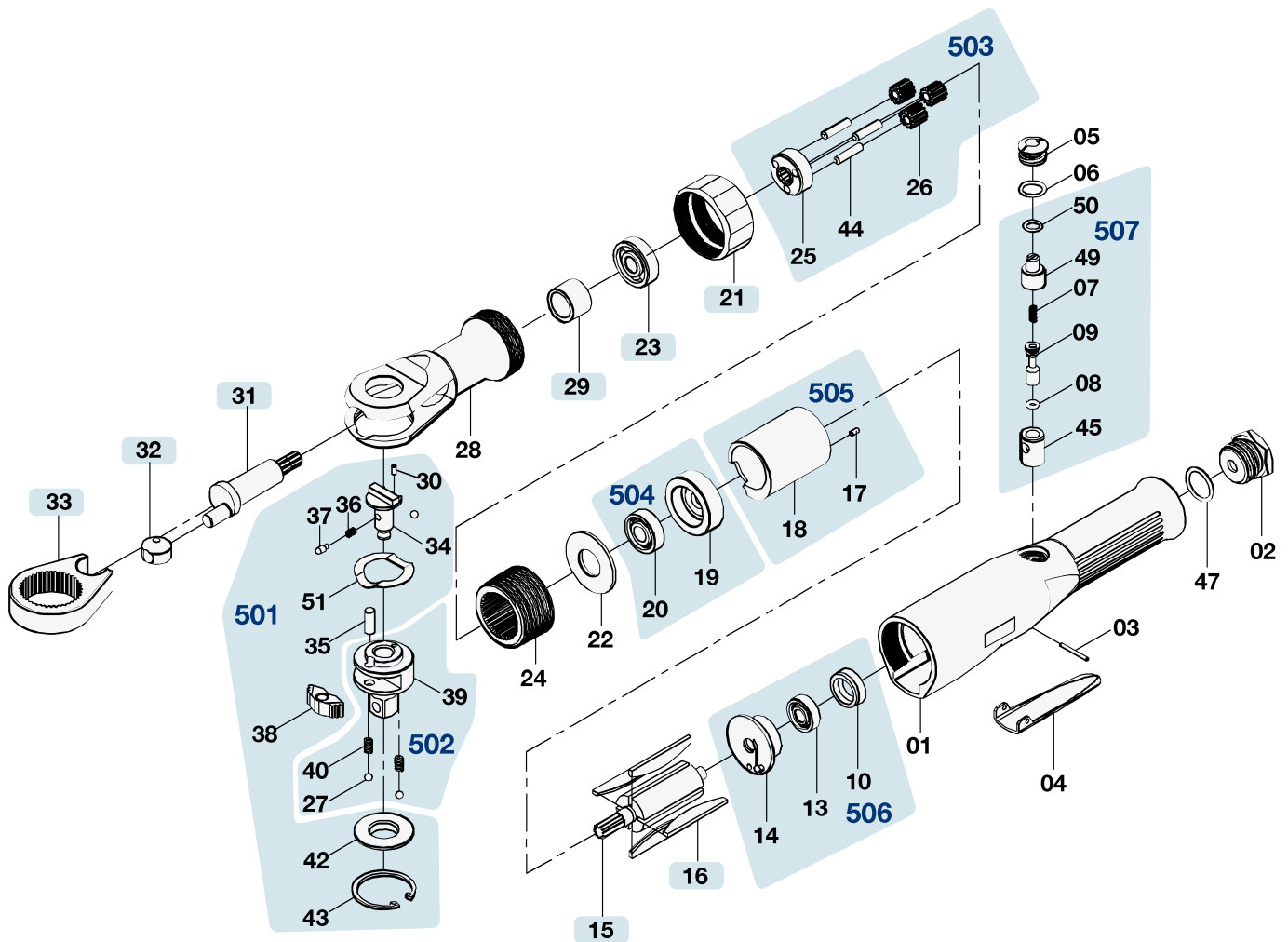



Ersatzteile 9022 Lg-1

Spare parts · Pièces de rechange



| Pos | HAZET No. | Bezeichnung | Designation | Désignation |  |
|-----|---------------|----------------|--------------|--------------------|---|
| 1 | | Gehäuse | Housing | Boîtier | 1 |
| 2 | | Lufteinlass | Air inlet | Admission d'air | 1 |
| 3 | | Hebel-Stift | Lever pin | Goupille à levier | 1 |
| 4 | | Hebel | Lever | Levier | 1 |
| 5 | | Ventilschraube | Valve screw | Vis de soupape | 1 |
| 8 | | O-Ring | O-ring | Joint torique | 1 |
| 15 | 9022 Lg-012 | | | | 1 |
| 16 | 9022 Lg-013/4 | Lamellen | Fins | Lamelles | 4 |
| 21 | 9022 Lg-08 | | | | 1 |
| 23 | 9022 Lg-07 | Kugellager | Ball bearing | Roulement à billes | 1 |
| 29 | 9022 Lg-06 | | | | 1 |
| 31 | 9022 Lg-03 | Kurbelwelle | Crankshaft | Vilebrequin | 1 |

| Pos | HAZET No. | Bezeichnung | Designation | Désignation |  |
|-----|---------------------|----------------|-------------------------------|-------------------------------|---|
| 32 | 9022 Lg-02 | Antriebsbuchse | <i>Drive bush</i> | <i>Douille d'entraînement</i> | 1 |
| 33 | 9022 Lg-01 | Gabel | <i>Fork</i> | <i>Fourche</i> | 1 |
| 501 | 9022 Lg-04/9 | | | | 1 |
| 502 | 9022 Lg-05/5 | | | | 1 |
| 503 | 9022 Lg-09/7 | | | | 1 |
| 504 | 9022 Lg-010/2 | | | | 1 |
| 505 | 9022 Lg-011/2 | Zylinder | <i>Hollow piston cylinder</i> | <i>Vérin</i> | 1 |
| 506 | 9022 Lg-014/3 | Lager · hinten | <i>Bearing · rear</i> | <i>Palier · arrière</i> | 1 |
| 507 | 9022 Lg-015/6 | | | | 1 |



DE

HAZET Service online:
www.hazet.de/de/home/service/



EN



DE

HAZET Ersatzteil-Shop
HAZET Spare-parts-shop:
www.hazet.de/ersatzteil-shop




EN

Zur Bestellung und für Rückfragen wenden Sie sich bitte an unsere Service-Abteilung
For Orders and questions please refer to our service-centre

 +49 (0) 21 91 / 7 92 355 ·  +49 (0) 21 91 / 7 92 523 ·  service-center@hazet.de

HAZET-WERK – Hermann Zerver GmbH & Co. KG ·  10 04 61 · 42804 REMSCHEID

 Gùldenwerther Bahnhofstrasse 25 – 29 · 42857 REMSCHEID · GERMANY