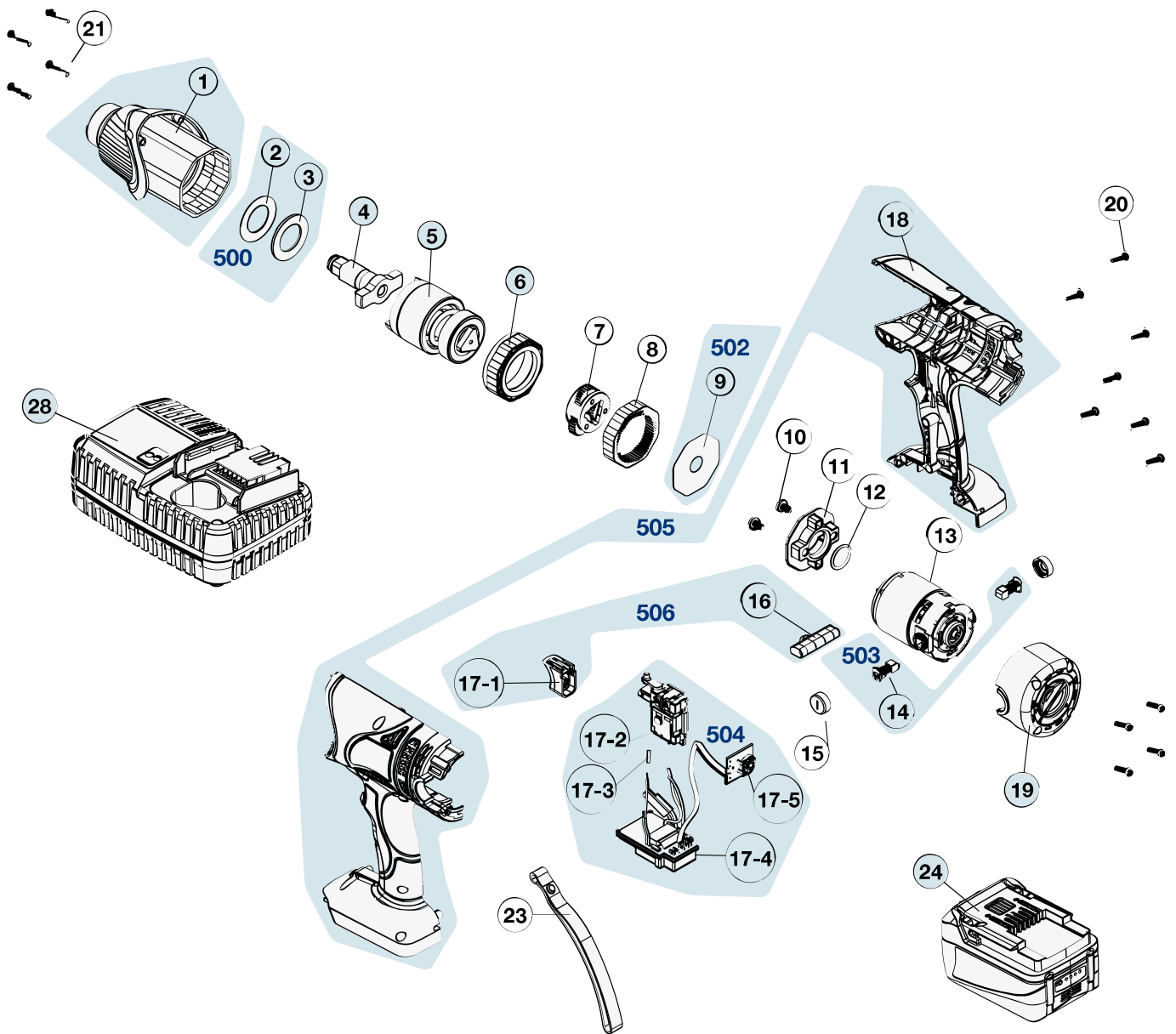



# Ersatzteile 9212-2

Spare parts · Pièces de rechange



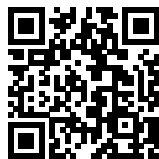
| Pos | HAZET No.   | Bezeichnung                | Designation           | Désignation                 |  |
|-----|-------------|----------------------------|-----------------------|-----------------------------|---|
| 1   |             | Vorderes Gehäuse           | Front housing         | Boîtier avant               | 1   |
| 4   | 9212 N-1-02 | Vierkant                   | Square                | Carré                       | 1   |
| 5   | 9212 N-1-03 | Schlagwerk                 | Striking mechanism    | Mécanisme de frappe         | 1   |
| 6   | 9212 N-1-04 | Lagerhalter                | Bearing holder        | Support de palier           | 1   |
| 10  |             | Planetengetriebe-Schrauben | Planetary gear screws | Vis de réducteur planétaire | 2   |
| 11  |             | Tellerrad-Befestigung      | Ring gear fastening   | Fixation de couronne        | 1   |
| 12  |             | O-Ring                     | O-ring                | Joint torique               | 1   |
| 13  |             | Motor                      | Engine                | Moteur                      | 1   |

| Pos | HAZET<br>No.   | Bezeichnung                    | Designation                    | Désignation                             |  |
|-----|----------------|--------------------------------|--------------------------------|---|---|
| 15  |                | Schutzdeckel                   | Protective cover               | Couvercle de protection                 | 2   |
| 19  | 9212-2-06      | Gehäuse · hinten               | Housing · rear                 | Boîtier · arrière                       | 1   |
| 20  |                | Vordere Schrauben              | Front screws                   | Vis avant                               | 4   |
| 21  |                | Hintere Schrauben              | Rear screws                    | Vis arrière                             | 11  |
| 24  | 9212 N-01      | Ersatz-Akku                    | Replacement battery            | Batterie de rechange                    | 1   |
| 28  | 9212 N-02      | Schnell-Ladegerät              | Quick charger                  | Chargeur rapide                         | 1   |
| 500 | 9212 N-1-06/10 | Scheiben Satz                  | Washer set                     | Jeu de disques                          | 10  |
| 501 |                | Planetengetriebe, Inhalt: 7, 8 | Planetary gear, contents: 7, 8 | Réducteur planétaire,<br>contenu : 7, 8 | 2   |
| 502 | 9212 N-1-08/10 |                                |                                |   | 10  |
| 503 | 9212 N-03/2    | Ersatz-Kohlebürsten            | Replacement carbon brushes     | Charbons de rechange                    | 2   |
| 504 | 9212-2-010/4   | Elektronik-Betätigungsknopf    | Electronic control button      | Bouton de commande<br>électronique      | 4   |
| 505 | 9212-2-011/2   | Gehäuse                        | Housing                        | Boîtier                                 | 2   |
| 506 | 9212 N-1-011/2 | Betätigungseinheit             | Operating unit                 | Unité de commande                       | 2   |

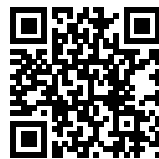


DE

HAZET Service online:  
[www.hazet.de/de/home/service/](http://www.hazet.de/de/home/service/)



EN




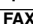
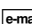
DE


HAZET Ersatzteil-Shop  
 HAZET Spare-parts-shop:  
[www.hazet.de/ersatzteil-shop](http://www.hazet.de/ersatzteil-shop)




EN

Zur Bestellung und für Rückfragen wenden Sie sich bitte an unsere Service-Abteilung  
 For Orders and questions please refer to our service-centre

 +49 (0) 21 91 / 7 92 355 ·  +49 (0) 21 91 / 7 92 523 ·  [service-center@hazet.de](mailto:service-center@hazet.de)

**HAZET-WERK** – Hermann Zerver GmbH & Co. KG ·  10 04 61 · 42804 REMSCHEID

 Gùldenwerther Bahnhofstrasse 25 – 29 · 42857 REMSCHEID · GERMANY